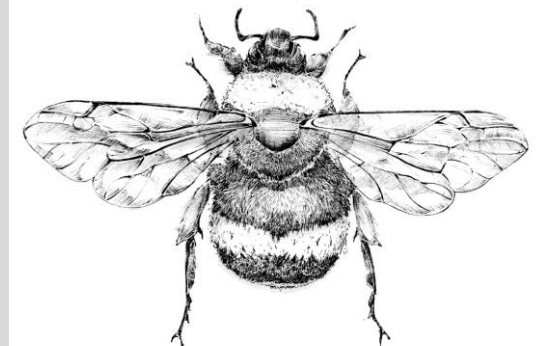
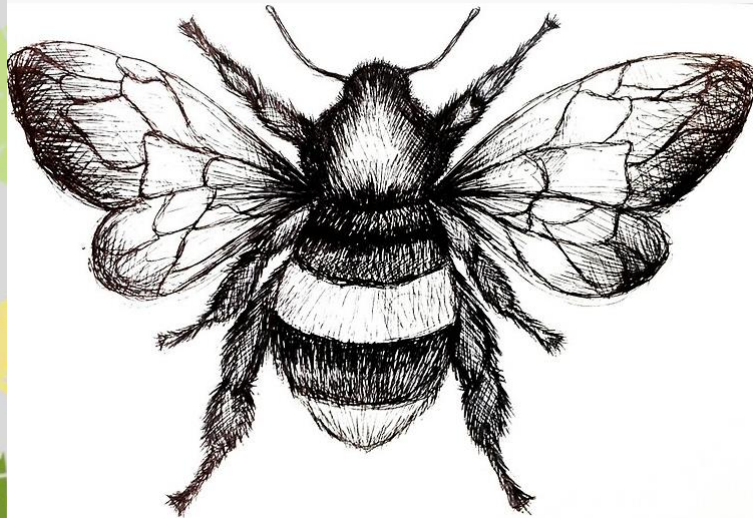
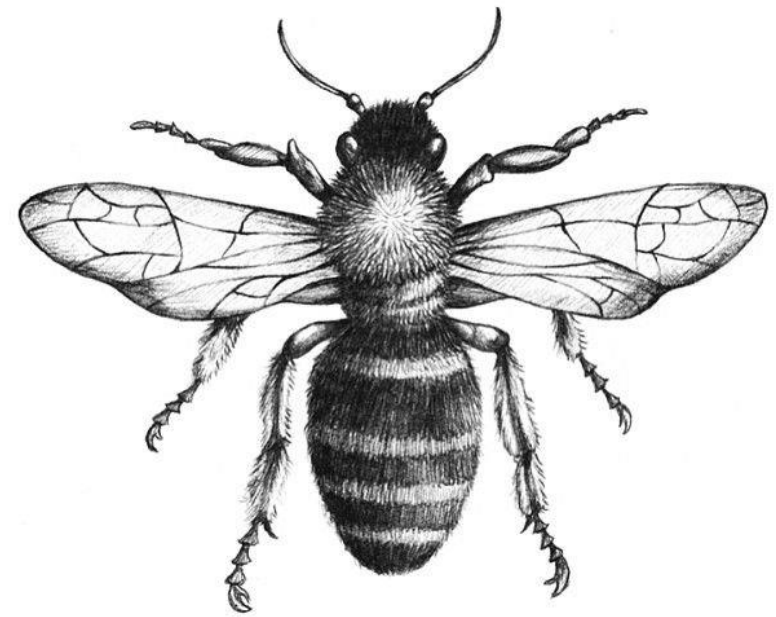


A botanical illustration background featuring several different types of plants. On the left, there is a tall, thin stem with a large, dark, textured seed head at the top. In the center, there are several stems with various leaf shapes, including some with serrated edges and others with more rounded, pointed leaves. On the right, there is a stem with a large, feathery leaf. A central green banner with the text "Bee Art" is overlaid on the illustration.

# Bee Art

# Drawing

Use drawing pencils and sketch out your shape lightly to start. Use your pencil in different ways to create different marks for e.g. flicking for the hairs, shading for the wings, and speckling.





# Pastel Drawing

Try using a coloured background and just white and black/grey. Remember to blend with your fingers. Try using the pastel in different ways to make different marks



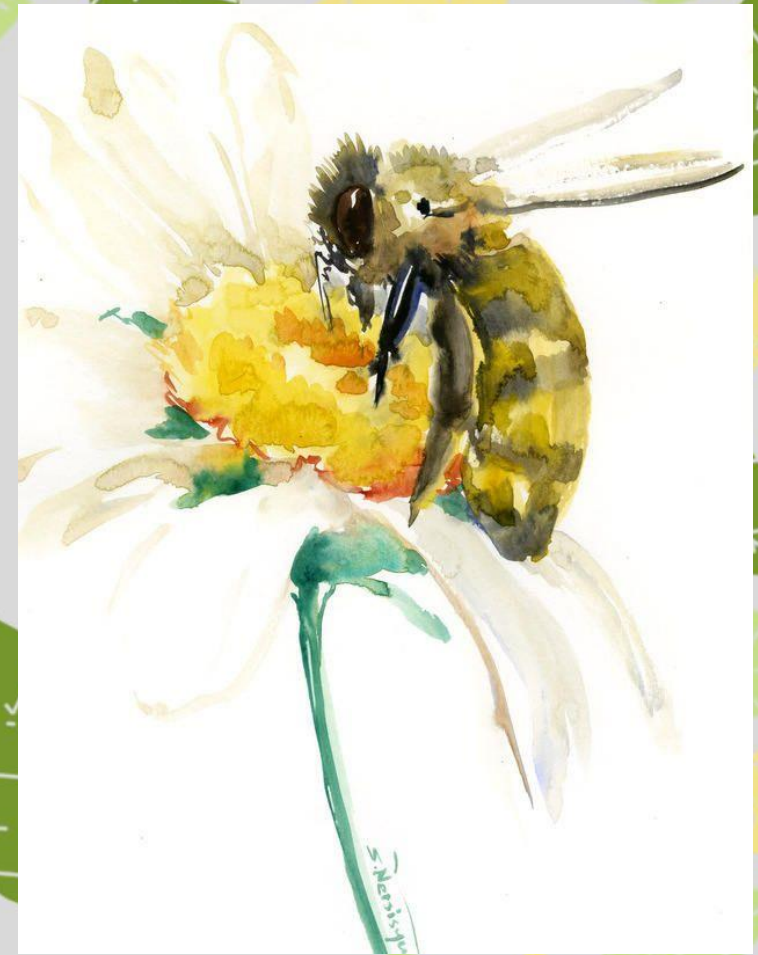
# Coloured pencils

Try using different marks with the pencils for e.g. flicking marks, speckles, shading into another colour



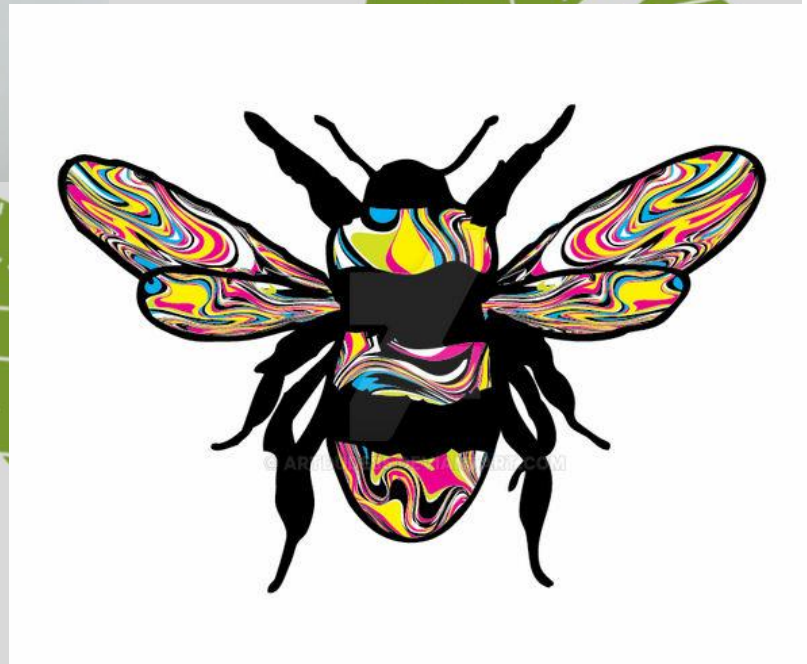
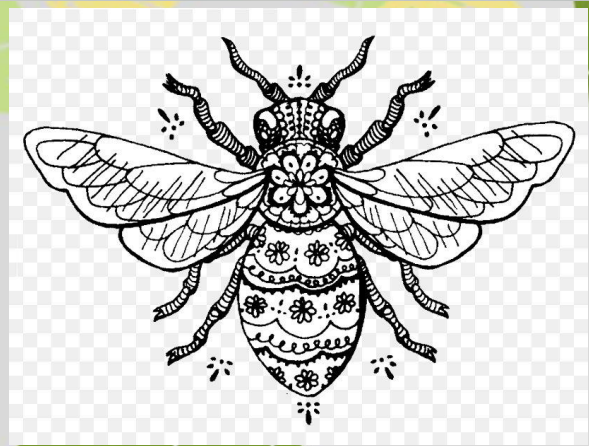
# Collage

Use papers- newspaper, wrapping paper, tissue and coloured paper, junk papers. You can also add beads, buttons, threads, wools, fabrics or anything else that will stick!



# Watercolour

Sketch out the shape lightly before you paint Try using your brush in different ways to make different marks. Let each layer dry between to stop it all smudging. Create splashes around the bee for a painterly effect!



# Patterned Bees

Use whatever you fancy and fill your bee shape with patterns and colours!