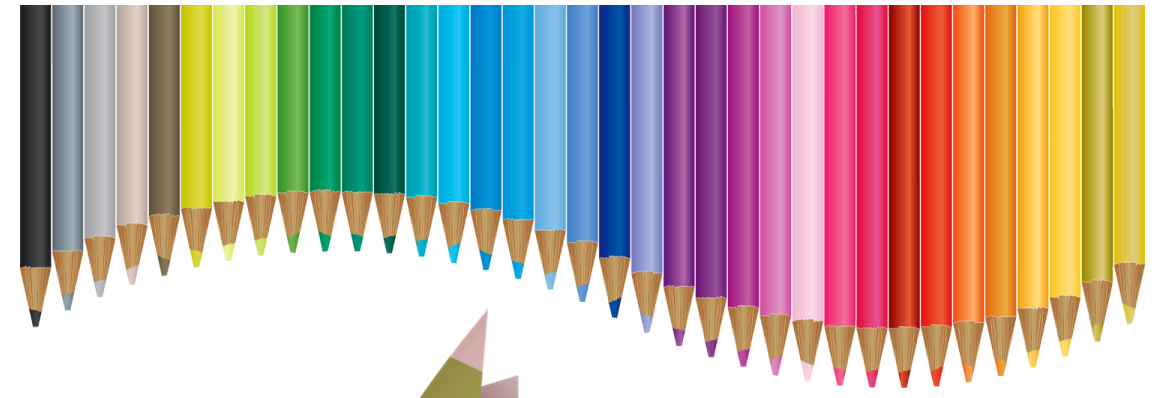


# Join us this Easter for activities for all the family



The SALISBURY  
**MUSEUM**  
[www.salisburymuseum.org.uk](http://www.salisburymuseum.org.uk)



## **Easter Trail - The Hatchling - 5 - 21 April**

The Hatchling is on a quest to find its family.  
Can you follow the clues to see where it has been and help discover who its family could be?  
Collect your free trail at reception at the start of your visit.

## **Studio Takeover - 5 - 21 April**

Filled with dressing up, building blocks, activity sheets, a cosy book corner and more, the Studio will be open to all ages to stay and play during your museum visit. This April we have easter crafts along with some 1980s activities too!

## **Under 5s Friday - 11 April**

An Easter themed Under Fives Friday, with lots of creativity and eggcellent fun to be had!  
Lots of arty, crafty fun and play for your toddlers and a chance to make your own Easter creations to take home

## **Discovery Days - 8 & 15 April**

The museum hall will be a hive of buzzing creativity with Spring arty fun for everyone!  
Create beautiful bright crafty creations to take home and display with pride!  
If your kids love making arty mayhem but you dread the tidying up afterwards then this is definitely the place for you and your young ones to put your imaginations to the test and make some fabulous Easter Art.

If all this sounds a bit exhausting, don't worry: the café will be open all day with hot drinks and delicious food!

## **And don't forget our Spring Fayre Family Fun Day on 5 May!**

The King's House, 65 The Close  
Salisbury, SP1 2EN  
Open Monday to Sunday 10am - 5pm  
Tel: 01722 332 151



**No need  
to book  
&  
all activities are  
included in  
normal museum  
admission**