

The logo for BRONEL features the word "BRONEL" in a bold, grey, sans-serif font. The letter "O" is replaced by a stylized black silhouette of two figures, one standing and one sitting in a wheelchair, both with their arms raised. Above the figures is a cluster of colorful dots in shades of blue, green, yellow, and purple. The background is white with large, overlapping, semi-transparent circles in shades of purple, orange, and green on the right side.

BRONEL

An educational community with no barriers only potential



BRUNEL



BRUNEL
ACADEMIES TRUST

Brunel Academies Trust (BAT)



BRUNEL
EDUCATION

Brunel Education (BE)



Our Vision is to be a creative education community opening doors, opening minds and realising potential.



Our Mission is to ensure all our children and young people are given every opportunity to be engaged, inspired and empowered to enable them to flourish and lead safe and successful lives.



Our Values The Vision and Mission are underpinned by our shared core values.

About our Provisions

January 2025

1689 Children and Young People (CYP)

Number and % of CYP per provision

25 Specialist Nursery (1.5%)

889 Mainstream Primary (52.6%)

65 of which are based in a Unit or Resource Base

358 Church of England Schools (21.2%)

698 Specialist Academies (41.3%)

77 Specialist College (4.6%)

About our Provisions

January 2025



129

Teaching spaces



Extensive Outreach,
Alternative Provision
& Support Services



39

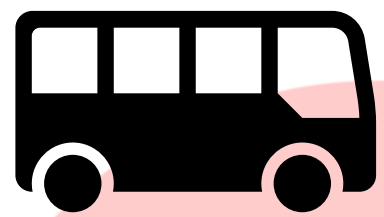
Cars

17
Buildings



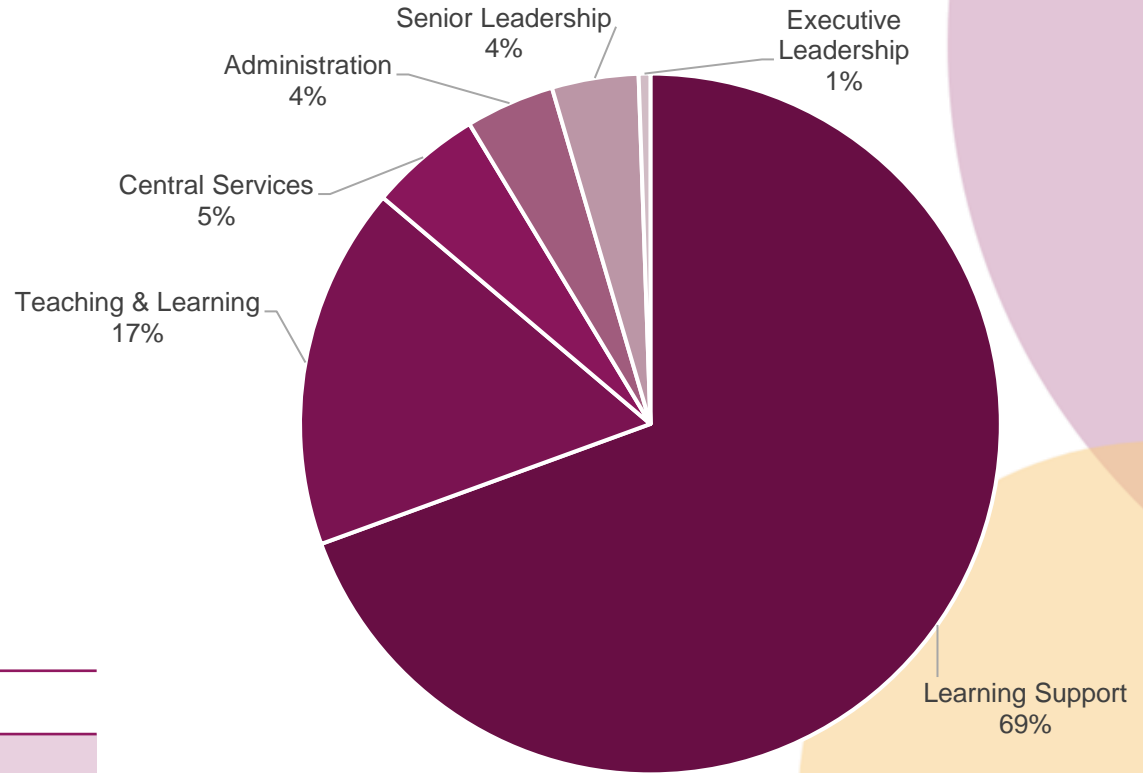
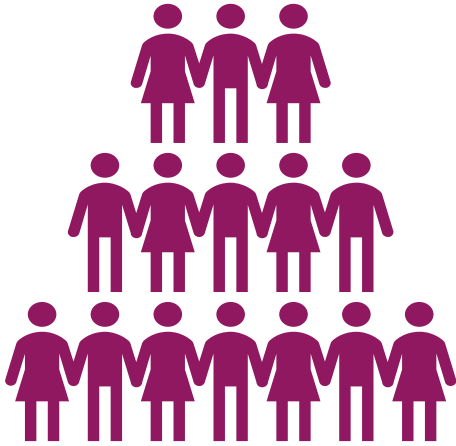
24

Minibuses



About our People

January 2025



929 Staff

37 Senior Leadership Team

155 Teaching & Learning

643 Learning Support

38 Administration Support

5 Executive Leadership Team

48 Central Services Team

Mainstream Provision

**WESTLEA
PRIMARY SCHOOL**



Phase: Mainstream Primary with Nursery, Special Resource Provision and Special Unit
Number of Children: 286 (including 3 SRP and 31 Unit)

Designation: SRP 4 - 11 years with Physical Difficulties, Unit 4 - 11 years with complex needs

Location: Swindon

Sites: 1



Phase: Primary with SEN Resource

Number of Children: 358 (including 14 RB)

Designation: 7 - 11 years

Location: Salisbury

Sites: 1



**Wyndham Park
Infants' School**

Phase: Primary with SEN Resource Base

Number of Children: 245 (including 20 RB)

Designation: 5 - 7 years

Location: Salisbury

Sites: 1

Specialist Provision



Brimble Hill School

Phase: Special Primary

Number of Children: 122

Designation: 2-11 years with Severe Learning Difficulties (SLD) Profound & Multiple Learning Difficulties (PMLD) and Autism

Location: Swindon

Sites: 2



The Chalet School

Dream, Believe, Achieve!

Phase: Special Primary

Number of Children: 86

Designation: 2-11 years Complex Autism

Location: Swindon

Sites: 2



EXETER HOUSE SCHOOL

I can learn, you can have friends, we can grow together

Phase: Special All Through

Number of Children: 194

Designation: 4-19 years Severe Learning Difficulties (SLD) / Profound & Multiple Learning Difficulties (PMLD) and complex needs

Location: Salisbury

Sites: 3

Specialist Provision



Phase: Special Secondary

Number of Children: 125

Designation: 11-19 years with Autism and/or Social Communication Interaction Difficulties

Location: Swindon

Sites: 3



Phase: Special Secondary

Number of Children: 171

Designation: 11-19 years Severe Learning Difficulties (SLD) / Profound & Multiple Learning Difficulties (PMLD) and Autism

Location: Swindon

Sites: 2 (group based at Horizons College)

Specialist Higher Education and Alternative/Respite/Outreach Provision



Phase: Primary
Unregistered Alternative
Provision
Number of Children: Up to
18 (2 Day Placements)
Designation: Early Years
and Key Stage 1
Location: Swindon



Phase: Respite Care
Number of CYP: 66
Designation: 5-18
years with SEND
Location: Swindon



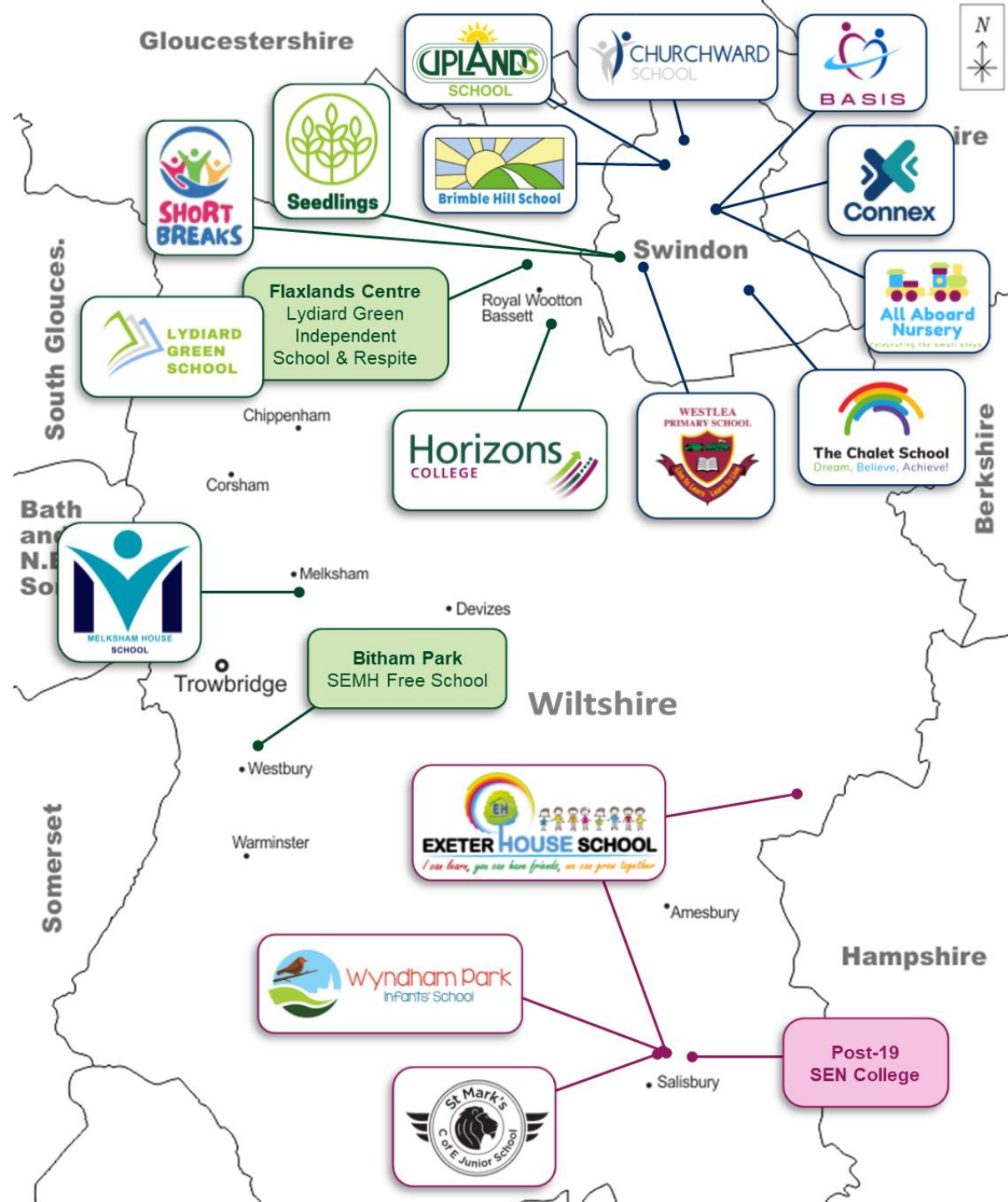
Phase: Specialist Post 16 Institution
Number of Learners: 77
Designation: 16 – 25 years Special Post 16
Institution (SPI)
Location: Royal Wootton Bassett



Phase: Range of services and
specialist staff to support schools,
professionals, parents and families
including All Aboard Nursery (26 CYP)
and Connex (17 CYP)
Designation: Children and young
people from 3-19 years
Location: Swindon

Brunel Map

Existing and Future Provisions



Key Features

What makes Brunel Unique?

What we do...

Aspirations for ALL

Families & Children & Young

Children First

People Value

**Promote
Diversity**

**0%
Exclusion**

**Autonomy,
Individuality
& Creativity**

People

Collaborative

Creative

Development

Partnerships

Education

**Sustainable
Environments**

**Quality
Assurance**

Family

Consistent Practice

Key Features

What makes Brunel Unique?

How we do it...

**Collaboration
& Co-production**

Value Diversity **Doing it Differently**

Consistent **Together**

Standards

Child Centred

NOT Standardisation

Community

**Internal
Alignment**

**Shaping Education
Landscape**

MAT

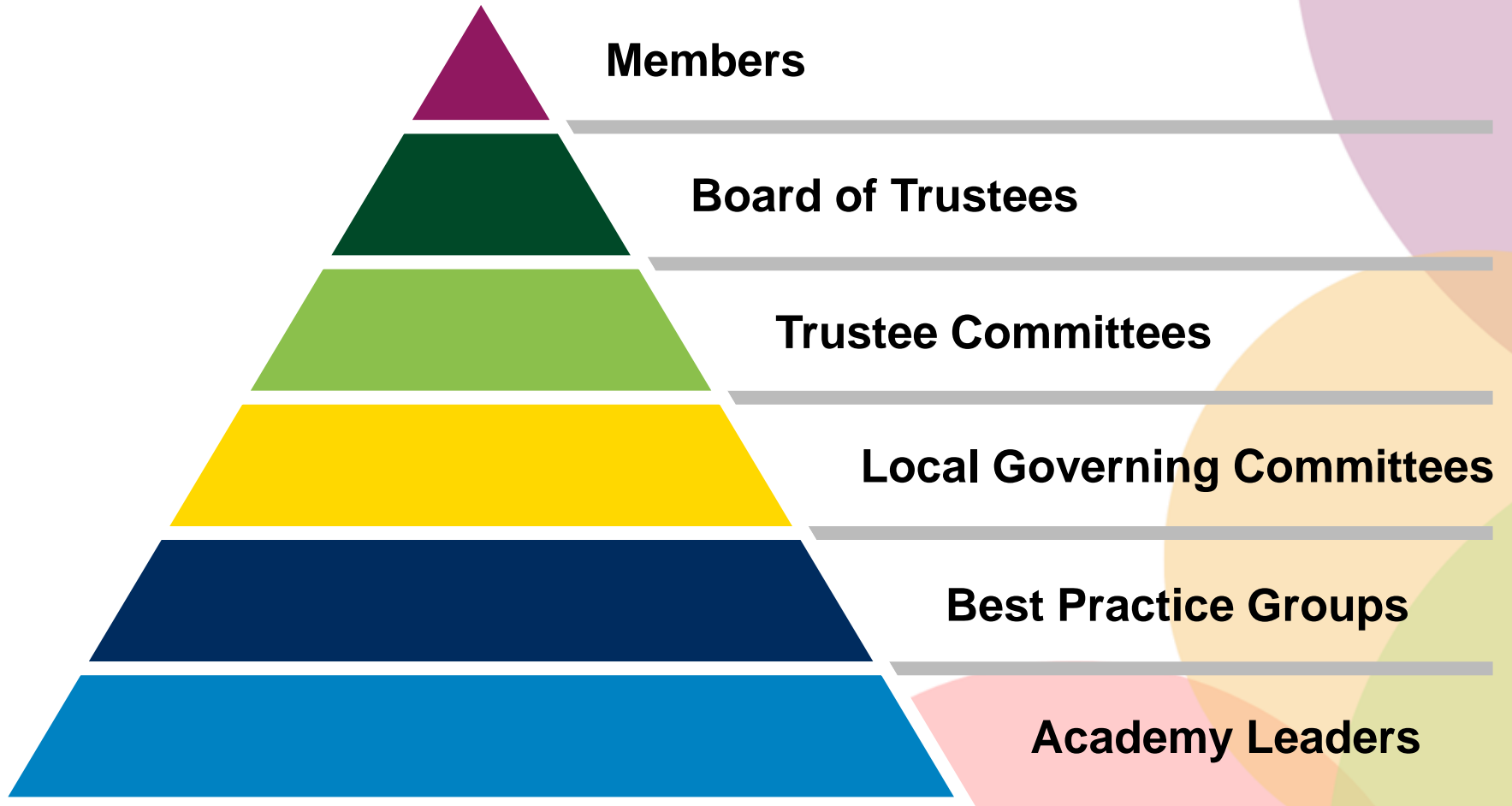
**External
Influence**

simplification

Brunel Strategy



Governance Structure



Board Structure

BRUNEL ACADEMIES TRUST

BOARD OF TRUSTEES

FOUNDATION MEMBER &
FOUNDATION TRUSTEE
William Wyldbore-Smith
Chair
Legal Expert

MEMBER
Michelle Howard
Independent
Legal Expert

FOUNDATION MEMBER
**Salisbury Diocesan
Board of Education**

MEMBER
Shirley Ludford
Independent
Business / Community

TRUSTEE / CEO
Jackie Fieldwick

FOUNDATION TRUSTEE
Trevor Branch

FOUNDATION TRUSTEE
Louise Moelwyn-Hughes

SAFEGUARDING LINK TRUSTEE
Alison Thunder
Vice Chair

TRUSTEE
Dr Marion Watson

TRUSTEE
Nigel Green

TRUSTEE
Chris Gould

TRUSTEE
Jerry Giles

TRUSTEE
Chris Sims

TRUSTEE
Andy Tait

STANDARDS COMMITTEE

BAT & BE JOINT COMMITTEES

PEOPLE
COMMITTEE

CHAIRS NETWORK

AUDIT & RISK
COMMITTEE

EXECUTIVE PAY &
PERFORMANCE COMMITTEE

FINANCE & CAPITAL
COMMITTEE

Board Structure

BRUNEL EDUCATION

(Subsidiary Company of Brunel Academies Trust)

BOARD OF TRUSTEES

SOLE CORPORATE MEMBER
Brunel Academies Trust

TRUSTEE / CEO
Jackie Fieldwick

TRUSTEE
Chris Sims
Chair

TRUSTEE
William Wyldbore-Smith

SAFEGUARDING LINK TRUSTEE
Jenny Baylis

TRUSTEE
Joe Szymanski

TRUSTEE
Hayley Reeve

TRUSTEE
Gareth Appleby-Thomas

BAT & BE JOINT COMMITTEES

PEOPLE COMMITTEE

CHAIRS NETWORK

AUDIT & RISK COMMITTEE

EXECUTIVE PAY & PERFORMANCE
COMMITTEE

FINANCE & CAPITAL COMMITTEE

Quality of Education Structure

CHIEF EXECUTIVE OFFICER (CEO) & ACCOUNTING OFFICER (AO)
Jackie Fieldwick, MBE (FT)

EDUCATION STANDARDS

DIRECTOR OF EDUCATION
(SWINDON)
Karen Iles (FT)

DIRECTOR OF EDUCATION
(WILTSHIRE & BE)
Mike Thomas (FT)

**TRUST SAFEGUARDING
LEAD**
Catherine Clark (FT)

**CONTINUOUS PROFESSIONAL
DEVELOPMENT LEAD**
Dr. Sarah Owenson (FT)

**SCHOOL IMPROVEMENT
PARTNER**
Debs Scholes (0.8)

**CHURCH SCHOOL
SIAMS LEAD**
Vacancy (0.4)

**SCHOOL INCLUSION
PARTNER**
Liz Fewings (0.6)

NETWORK & BEST PRACTICE GROUPS

AUDIT & COMPLIANCE

**TRUST IMPROVEMENT
PARTNER** (External QA)
Jane Edgerton

**EXTERNAL EDUCATION
CONSULTANT**
Liz Banister

GOVERNANCE & DEVELOPMENT

**GOVERNANCE
LEAD**
Michelle Carter (0.8)

**DEVELOPMENT
LEAD**
Paul Davis (FT)

**DEVELOPMENT
LEAD**
Sharon Day (FT)

MARKETING, BRAND & MEDIA
COMPLAINTS, COMPLIANCE & LEGAL
FUNDRAISING & GRANTS
EXECUTIVE SUPPORT & ADMINISTRATION
PLACE PLANNING & ANALYTICS

Ensuring Growth Does Not Compromise Quality

- **Standards** not Standardisation
- Rigour & Robustness in **Monitoring** – External Trust Improvement Partner
- **Capacity** – Right people with the right skills
- Working with External Partners to ensure **Quality**; SIAMS, Ofsted
- **Transparency**
- **Partnership** working

Education QA

2024/25

Summer: 26 Jul – 31 Aug 2025

BRUNEL EDUCATION QA	1	02 Sep – 06 Sep	Half Term: 24 Oct – 03 Nov 2024		Christmas: 21 Dec – 06 Jan 2025		Half Term: 15 Feb – 23 Feb 2025		Easter: 05 Apr – 21 Apr 2025		1	02 Jun – 06 Jun						
	2	09 Sep – 13 Sep	1	04 Nov – 08 Nov	1	06 Jan – 10 Jan	1	24 Feb – 28 Feb	1	22 Apr – 25 Apr	2	09 Jun – 13 Jun						
	3	16 Sep – 20 Sep	2	11 Nov – 15 Nov	2	13 Jan – 17 Jan	2	03 Mar – 07 Mar	2	28 Apr – 02 May	3	16 Jun – 20 Jun						
	4	23 Sep – 27 Sep	3	18 Nov – 22 Nov	3	20 Jan – 24 Jan	3	10 Mar – 14 Mar	3	06 May – 09 May	4	23 Jun – 27 Jun						
	5	30 Sep – 04 Oct	4	25 Nov – 29 Nov	4	27 Jan – 31 Jan	4	17 Mar – 21 Mar	4	12 May – 16 May	5	30 Jun – 04 Jul						
	6	07 Oct – 11 Oct	5	02 Dec – 06 Dec	5	03 Feb – 07 Feb	5	24 Mar – 28 Mar	5	19 May – 23 May	6	07 Jul – 11 Jul						
	7	14 Oct – 18 Oct	6	09 Dec – 13 Dec	6	10 Feb – 14 Feb	6	31 Mar – 04 Apr	Half Term: 24 May – 01 Jun 2025		7	14 Jul – 18 Jul						
	8	21 Oct – 23 Oct	7	16 Dec – 20 Dec	Public Holidays: 25 Dec, 26 Dec, 01 Jan		Public Holidays: 18 Apr, 21 Apr		Public Holidays: 05 May, 26 May		8	21 Jul – 24 Jul						
	TERM ONE			TERM TWO			TERM THREE			TERM FOUR			TERM FIVE			TERM SIX		
BOARD + COMMITTEE MEETINGS	BE Board Meeting BAT Board Meeting BAT Standards Committee			BAT/BE People Committee BAT/BE Audit + Risk Committee BAT/BE Finance + Capital Committee Joint BAT / BE Board Meeting + AGM			BAT/BE People Committee BAT Standards Committee			BAT/BE People Committee BAT/BE Audit + Risk Committee BAT/BE Finance + Capital Committee BAT Board Strategic Development BE Board Strategic Development			BAT Standards Committee BAT/BE People Committee BAT/BE Audit + Risk Committee BAT/BE Finance + Capital Committee BE Board Meeting BAT Board Meeting					
LOCAL GOVERNING COMMITTEES	AIB Meetings Quality of Education Focus Learning Walks/Visits			LGC/MC/AIB Meetings			AIB Meetings Quality of Education Focus Learning Walks/Visits			LGC/LMC/AIB Meetings			AIB Meetings Quality of Education Focus Learning Walks/Visits			LGC/MC/AIB Meetings: + 25/26 Priorities		
GOV + TRUSTEE TRAINING	Safeguarding Training – KCSIE 2024			Education Team – Quality Assurance Framework			Safeguarding Training – Prevent/ Cybersecurity			GDPR			Education Team – Ofsted			Strategic Development Growth & Data		
EDUCATION TEAM ACTIVITY	HT, SLT + Teacher PM SIP + SEF/SAR Submission PM Target Overview Submission Deep Dive: Early Communication /Early Reading, Attendance			Annual Trust Report Deep Dive: Numeracy/Maths, Behaviour & Attitudes			HT PM Deep Dive: PSHE, Personal Development			Deep Dive: Physical & Sensory, SEND			QA Framework: Review Deep Dive: Foundation subjects, AP			HT PM Draft 25/26 EP SIP + SEF Deep Dive: To be agreed with Headteachers		
NETWORK + BEST PRACTICE GROUP MEETINGS: TEACHING + LEARNING SAFEGUARDING HEALTH + SAFETY ETHNICITY + DIVERSITY																		
EDUCATION PROVISION + PROVIDER ACTIVITY	Education Leaders Meeting: In Person (10am-2pm)			Education Leaders Briefing: Teams (30 min)			Education Leaders Meeting: In Person (10am-2pm)			Education Leaders Briefing: Teams (30 min)			Education Leaders Meeting: In Person (10am-2pm)			Education Leaders Briefing: Teams (30 min)		
	SCR Review LGC Reporting QA Activity + Scrutiny: Learning Walk Planning Scrutiny Marking/Work Scrutiny SLT Review			SCR Review Formal Lesson Obs QA Activity + Scrutiny: Learning Walk Planning Scrutiny Marking/Work Scrutiny SLT Review Internal Moderation			SCR Review LGC Reporting QA Activity + Scrutiny: Learning Walk Planning Scrutiny Marking/Work Scrutiny SLT Review			SCR Review Formal Lesson Obs QA Activity + Scrutiny: Learning Walk Planning Scrutiny Marking/Work Scrutiny SLT Review Internal Moderation			SCR Review LGC Reporting QA Activity + Scrutiny: Learning Walk Planning Scrutiny Marking/Work Scrutiny SLT Review			SCR Review QA Activity + Scrutiny: Learning Walk Planning Scrutiny Marking/Work Scrutiny SLT Review Internal Moderation		

Safeguarding QA

2024/25

Summer: 25 Jul – 31 Aug 2025

BRUNEL SAFEGUARDING QA	1	02 Sep – 06 Sep	Half Term: 24 Oct – 03 Nov 2024		Christmas: 21 Dec – 06 Jan 2025		Half Term: 15 Feb – 23 Feb 2025		Easter: 05 Apr – 21 Apr 2025		1	02 Jun – 06 Jun
	2	09 Sep – 13 Sep	1	04 Nov – 08 Nov	1	06 Jan – 10 Jan	1	24 Feb – 28 Feb	1	22 Apr – 25 Apr	2	09 Jun – 13 Jun
	3	16 Sep – 20 Sep	2	11 Nov – 15 Nov	2	13 Jan – 17 Jan	2	03 Mar – 07 Mar	2	28 Apr – 02 May	3	16 Jun – 20 Jun
	4	23 Sep – 27 Sep	3	18 Nov – 22 Nov	3	20 Jan – 24 Jan	3	10 Mar – 14 Mar	3	06 May – 09 May	4	23 Jun – 27 Jun
	5	30 Sep – 04 Oct	4	25 Nov – 29 Nov	4	27 Jan – 31 Jan	4	17 Mar – 21 Mar	4	12 May – 16 May	5	30 Jun – 04 Jul
	6	07 Oct – 11 Oct	5	02 Dec – 06 Dec	5	03 Feb – 07 Feb	5	24 Mar – 28 Mar	5	19 May – 23 May	6	07 Jul – 11 Jul
	7	14 Oct – 18 Oct	6	09 Dec – 13 Dec	6	10 Feb – 14 Feb	6	31 Mar – 04 Apr	Half Term: 24 May – 01 Jun 2025		7	14 Jul – 18 Jul
	8	21 Oct – 23 Oct	7	16 Dec – 20 Dec	Public Holidays: 25 Dec, 26 Dec, 01 Jan		Public Holidays: 18 Apr, 21 Apr		Public Holidays: 05 May, 26 May		8	21 Jul – 24 Jul
	TERM ONE		TERM TWO		TERM THREE		TERM FOUR		TERM FIVE		TERM SIX	
TRUST SAFEGUARDING LEAD	Safeguarding Governance		Governor + Trustee Safeguarding Training AIB/LMC/LGC Meetings		Safeguarding Link Trustee Meeting Parent Survey AIB/LMC/LGC Full Business Meetings		AIB/LMC/LGC Meetings		Safeguarding Link Trustee Meeting Safeguarding Link Governor Visits Staff Survey AIB/LMC/LGC Full Business Meetings		AIB/LMC/LGC Meetings Safeguarding Link Trustee Meeting Safeguarding Link Governor Visits AIB/LMC/LGC Full Business Meetings	
	Training:		Back to Basics		Managing Allegations		Working with Neglect		Harmful Sexual Behaviour		Radicalisation	
	Audit:		Referrals to Social Care SCR Review Deep Dive: Wyndham/ St Marks, Chalet		Allegations management SCR Review Deep Dive: Uplands, Churchward		RPI Reporting SCR Review Deep Dive: Shaw Farm, Westlea		Reports to Multi Agency Meetings SCR Review Deep Dive: Brimble Hill, BASIS		Low Level Concerns SCR Review Deep Dive: Exeter House	
← DSL Meetings, Safeguarding Supervision →												
PROVISION + PROVIDER ACTIVITY	Education Leaders Meeting:		In Person (10am-2pm)		Education Leaders Meeting:		Teams Briefing (30 min)		Education Leaders Meeting:		In Person (10am-2pm)	
	SCR Review LGC Reporting Weekly Safeguarding Report Whole Setting Safeguarding Training		SCR Review Weekly Safeguarding Report Safeguarding Best Practice Group Meeting		SCR Review LGC Reporting Weekly Safeguarding Report		SCR Review Weekly Safeguarding Report Safeguarding Best Practice Group Meeting		SCR Review LGC Reporting Weekly Safeguarding Report		SCR Review Weekly Safeguarding Report Safeguarding Best Practice Group Meeting	
Section 175/Self-Assessment Completion												

Quality Assurance Framework

All Schools in the Trust

Weekly	Personal Headteacher meeting
Monthly	Headteacher meeting with progress against termly action plan/RAP
Termly	Networking meetings
	Safeguarding Leads meeting
	Best Practice and Development meetings
Annual (but delivered termly)	Up to 6x half day Deep Dive QA checks led by DoE

By working collaboratively and engaging in these activities, we aim to:

- **Enhance** school effectiveness
- **Ensure** continuous improvement
- **Create** a culture of learning together and from each other.

Central Business Team Structure

CHIEF EXECUTIVE OFFICER (CEO) & ACCOUNTING OFFICER (AO)

Jackie Fieldwick, MBE (FT)

CHIEF FINANCE OFFICER (CFO) & CHIEF OPERATIONS OFFICER (COO)

Phil Helme (FT)

DIRECTOR OF OPERATIONS

Rob Reeve (FT)

DIRECTOR OF PEOPLE & CULTURE

David West (FT)

HEAD OF FINANCE

Louise Thomas (FT)

HEAD OF ESTATES & FACILITIES

Adrian Jefferies (FT)

HEAD OF TECHNOLOGY & GDPR

(FT)

HEAD OF PEOPLE

Hannah Rackauskas (FT)

HEAD OF RESOURCING

Kirsty Fyfe (FT)

FINANCE

SUPPLIER & PROCUREMENT

AUDIT, REPORTING & COMPLIANCE

FINANCE & BUDGET MANAGEMENT

FINANCIAL BENCHMARKING

CORPORATE RISK & GOVERNANCE

CAPITAL DEVELOPMENT IN FUNDING CIF BIDS

OPERATIONS

FACILITIES, ESTATES & FLEET MANAGEMENT

ICT, NETWORK & GDPR

PROJECTS & CONTRACTS

ASSET MANAGEMENT

ENVIRONMENT, RISK, HEALTH & SAFETY

COMMUNICATIONS SYSTEMS SUPPORT

PEOPLE

PEOPLE SERVICES & EMPLOYMENT LAW

RECRUITMENT & RESOURCING

PAYROLL, PENSIONS & BENEFITS

EMPLOYEE INDUCTION

SYSTEM ADMINISTRATION

LEARNING & DEVELOPMENT



September 24 to July 2025

Chief Executive Officer
(CEO)

Chief Finance Officer
(CFO/COO)

Directors of Education and Business

Swindon

All Aboard (Ind)
Special Nursery (28 places)

Brimble Hill (Pri)
Special School (120 CYP)
2 sites

The Chalet (Pri)
Special School (86 CYP)
2 sites

Churchward (Sec)
Special School (125 CYP)
3 sites

Uplands (Sec)
Special School (171 CYP)
Satellite class at Horizons

Westlea (Pri)
Mainstream School (253 CYP)
Special Resource Provision (4 CYP)
Special Unit (32 CYP)

Salisbury

Wyndham Park (Inf)
Mainstream School (226 CYP)
Special Resource Base (20 CYP)

St Mark's (Jnr)
Mainstream School (347 CYP)
Special Resource Base (13 CYP)

Exeter House (All Through)
Special School (193 CYP)
3 sites

Brunel Education

Connex Group (Ind)
Alternative Provision, BASIS,
Seedlings, Short Breaks

Horizons (Ind)
Special College (78 CYP)

Melksham House (Ind)
Special School (67 CYP)
Scheduled to open **April/May 2025**

September 2025 to July 2026

**Chief Executive Officer
(CEO)**

Chief Finance Officer (CFO/COO)

Chief Education Director (CED)

Directors of Education and Business

Swindon

All Aboard (Ind)
Special Nursery (28 places)

Merged School (All Through)
Special School (300 CYP)
3 sites and satellite provision at Horizons

The Chalet (Pri)
Special School (86 CYP)
2 sites

Churchward (Sec)
Special School (140 CYP)
3 sites

Westlea (Pri)
Mainstream School (245 CYP)
Special Unit (31 CYP)

Salisbury

Wyndham Park (Inf)
Mainstream School (210 CYP)
Special Resource Base (20 CYP)

St Mark's (Jnr)
Mainstream School (345 CYP)
Special Resource Base (20 CYP)

Exeter House (All Through)
Special School (210 CYP)
3 sites

Stratford Sub Castle (Pri)
Mainstream School (150 CYP)

Brunel Education

Connex Group (Ind)
Alternative Provision, BASIS,
Seedlings, Short Breaks

Horizons (Ind)
Special College (85 CYP)

Melksham House (All Through) (Ind)
Special School (67 CYP)

Flaxlands (Ind)
Special School/Respite (35/10 CYP)
Scheduled to open **January 2026**

September 2030

Chief Executive Officer (CEO)

Chief Finance Officer (CFO/COO)

Deputy Chief Executive Officer
(DCEO/CED)

Directors of Education and Business

Swindon

All Aboard (Ind)
Special Nursery (35 places)

Merged School (All Through)
Special School (300 CYP)
3 sites

The Chalet (Pri)
Special School (86 CYP)
2 sites

Churchward (Sec)
Special School (140 CYP)
3 sites

Westlea (Pri)
Mainstream School (245 CYP)
Special Unit (31 CYP)

Salisbury

Wyndham Park (Inf)
Mainstream School (180 CYP)
Special RB (20 CYP)

St Mark's (Jnr)
Mainstream School (300 CYP)
Special RB (20 CYP)

Exeter House (All Through)
Special School (210 CYP)
3 sites

Stratford Sub Castle (Pri)
Mainstream School (150 CYP)

Mainstream Primary
September 2026

Mainstream Primary
September 2027

West Wiltshire

Bitham Park (All Through)
Special School (130 CYP)
September 2026

Mainstream Primary
September 2026

Mainstream Primary
September 2027

Mainstream Primary
September 2028

Mainstream Primary
September 2029

Brunel Education

Horizons College (Ind)
Special College (85 CYP)

**Melksham House
(All Through) (Ind)**
Special School (67 CYP)

Wiltshire College
Special College
September 2026

Flaxlands (Ind)
Special School/Respite
(35/10 CYP)

**Connex Group (Ind)
(Swindon & Wiltshire)**
Alternative Provision, BASIS,
Seedlings, Short Breaks

The Transition to Becoming a BAT Academy

What will Stay the Same:

- Leadership and Operation within the school
- Financial management of school budget – with a particular focus on staff structures and resourcing
- Branding, ethos and identity of your school
- Teaching and Learning including Curriculum content and delivery
- Teachers Terms and Conditions
- Support staff will TUPE with either existing terms and conditions or TUPE to the Brunel Enhanced Conditions
- Relationship with other partners and schools
- Unique activities including school trips and after school clubs
- The school day
- Uniform

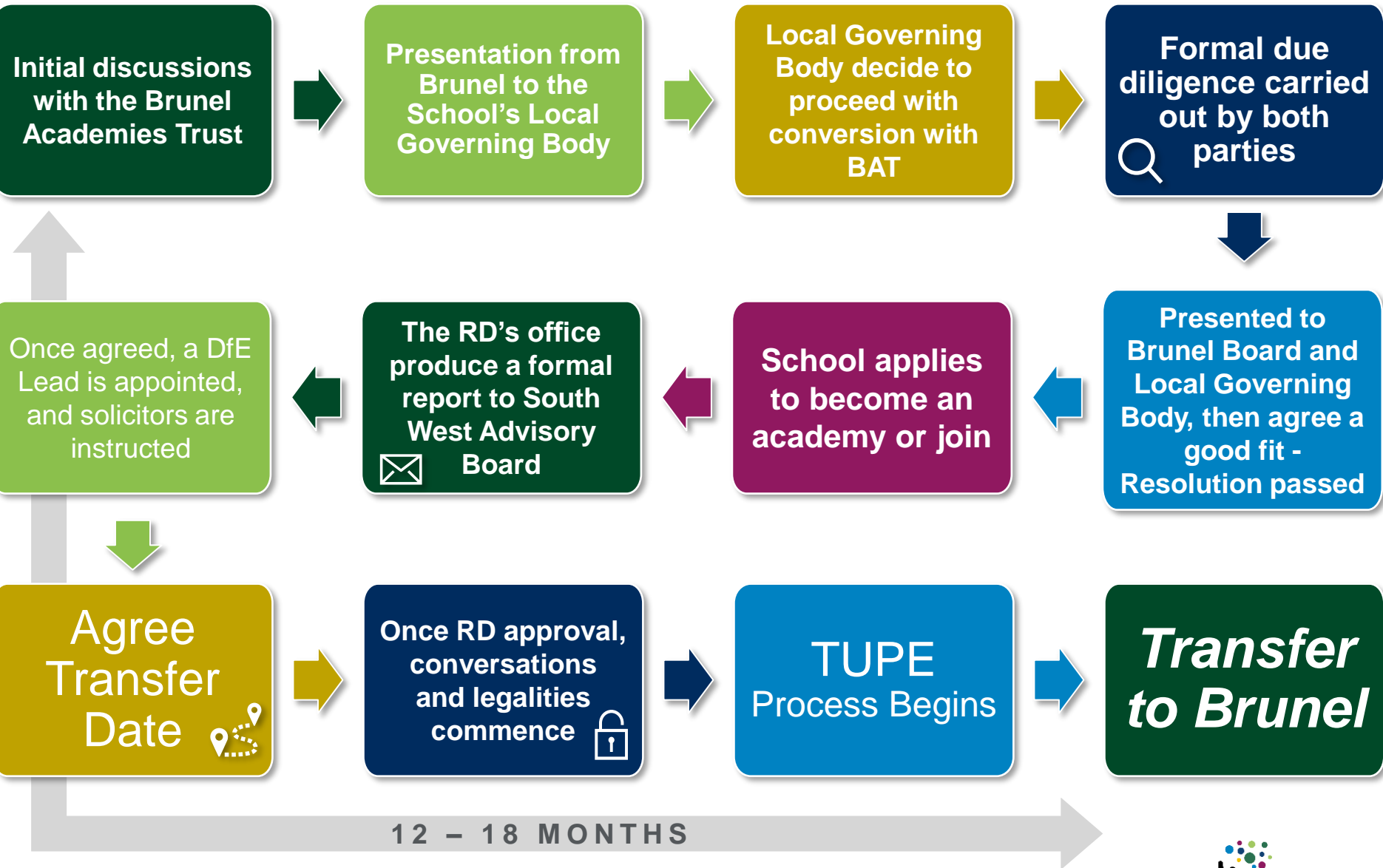
The above list is not definitive and is open for discussion

The Transition to Becoming a BAT Academy

What will Change:

- Working collaboratively within a supportive family of schools
- Compliance and Reporting Requirements (managed centrally)
- Corporate Governance
- Delegated Autonomy
- Delegated Budget
- Access to a wider range of resources and capacity
- Access to additional resources, capital funding and support
- Internal alignment of systems and processes – opportunities for Brunel-wide leadership roles and greater career opportunities
- Increased benefits from economies of scale & combined procurement efficiencies

Timeline for Joining



Stronger Together

Established Partnerships:

Salisbury Diocese

Bristol Diocese

Swindon Borough Council

Wiltshire County Council

f40 Group

South West Regional Directors

Pickwick Academies Trust

Ascend Academies Trust

Magna Learning Trust

Uplands Enterprise Trust

Brunel Education

Emerging Partnerships:

ALET UTC

Palladian

The Blue Kite Academy
Trust



Any Questions?

Jackie Fieldwick MBE
CEO

Telephone Number: **01793 286620**

Email: **jfieldwick@brunel.org.uk**

William Wyldbore-Smith
Chairman of Brunel Academies Trust