

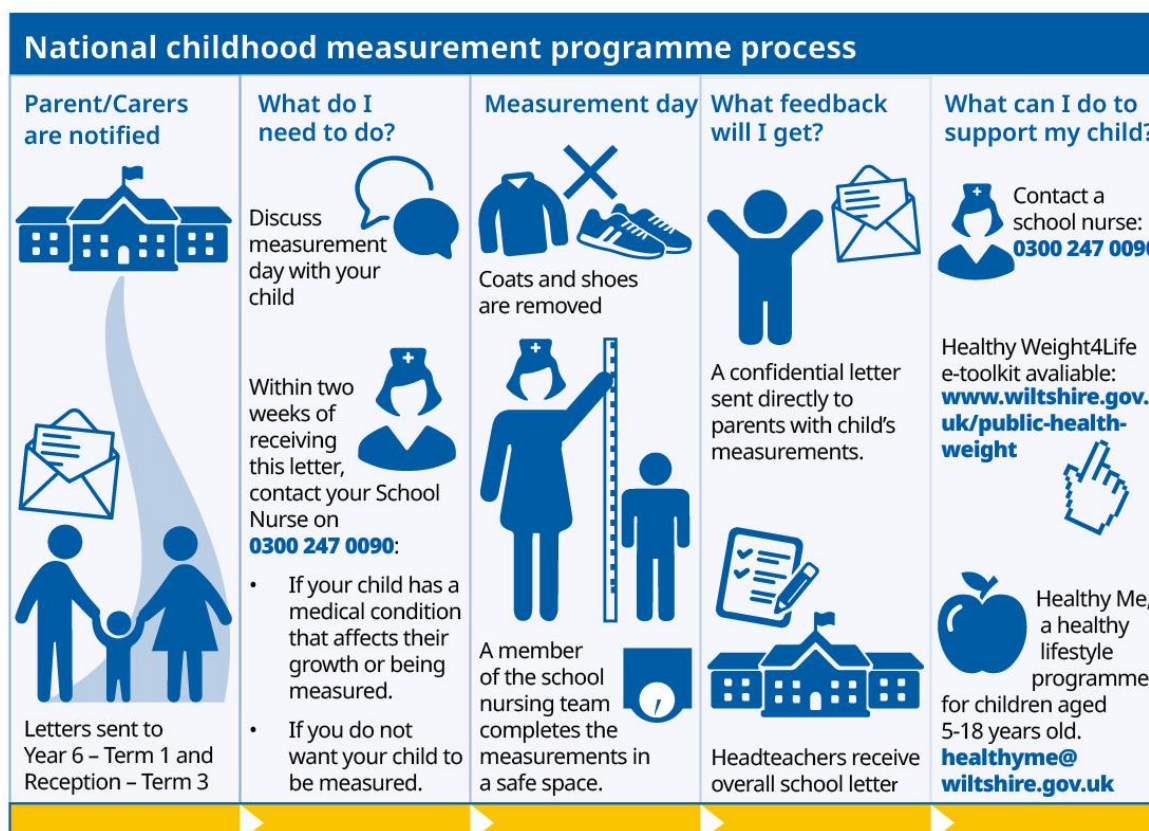
County Hall  
Bythesea Road  
Trowbridge  
Wiltshire  
BA14 8JN

September 2023

Dear Parent or Carer,

### Height and weight checks for children in Reception and Year 6

Every year in England, children in Reception and Year 6 have their height and weight checked at school as part of the National Child Measurement Programme (NCMP). Your child's class will take part in this year's programme.



### Why should my child participate?

The data gained from NCMP, helps schools and Local Authorities better plan for programmes, services, and resources to support families' physical and emotional health and wellbeing where it is needed most.

## Any concerns?

**If you have concerns with regards to your child's health/weight or would like further information you may find the below links/support helpful?**

- Visit **Healthy Weight 4 Life toolkit**  
[www.wiltshire.gov.uk/article/1413/Healthy-weight-4-life](http://www.wiltshire.gov.uk/article/1413/Healthy-weight-4-life)
- Contact your child's school nurse – 0300 247 0090 option 1
- **Better Health Healthier Families** (<https://www.nhs.uk/healthier-families/>) - Fun ideas to help your kids stay healthy
- **Healthy Steps - Step this way-** <https://healthysteps.betterhealth-healthierfamilies.co.uk/signup>

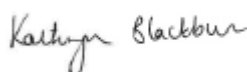
## Further information is available:

- The National Child Measurement Programme – NHS- [The National Child Measurement Programme - NHS \(www.nhs.uk\)](http://www.nhs.uk/the-national-child-measurement-programme)

## Information about how personal information and data is collected and stored can be found at:

- HCRG Care Group – <https://www.hcrpcaregroup.com/services/wiltshire-childrens-community-services>
- Wiltshire Children's Community Services Local Privacy Policy - [www.wiltshirechildrensservices.co.uk/privacy-policy/](http://www.wiltshirechildrensservices.co.uk/privacy-policy/)
- How we look after your health and care information – <https://digital.nhs.uk/about-nhs-digital/our-work/keeping-patient-data-safe/how-we-look-after-your-health-and-care-information> and <https://www.gov.uk/government/organisations/department-of-health-and-social-care/about/personal-information-charter>
- If you have any concerns about how data is processed for NCMP in Wiltshire please contact the Wiltshire Council Public Health team at [publichealth@wiltshire.gov.uk](mailto:publichealth@wiltshire.gov.uk) and add 'NCMP' to the subject line.

Yours faithfully,



**Kate Blackburn**  
Director of Public  
Health,  
Wiltshire Council



**Jen Salter**  
Director of Children's  
Services,  
Wiltshire Council



**Val Scrase**  
Regional Director  
Wiltshire and B&NES Children's  
Community Services  
HCRG Care Group